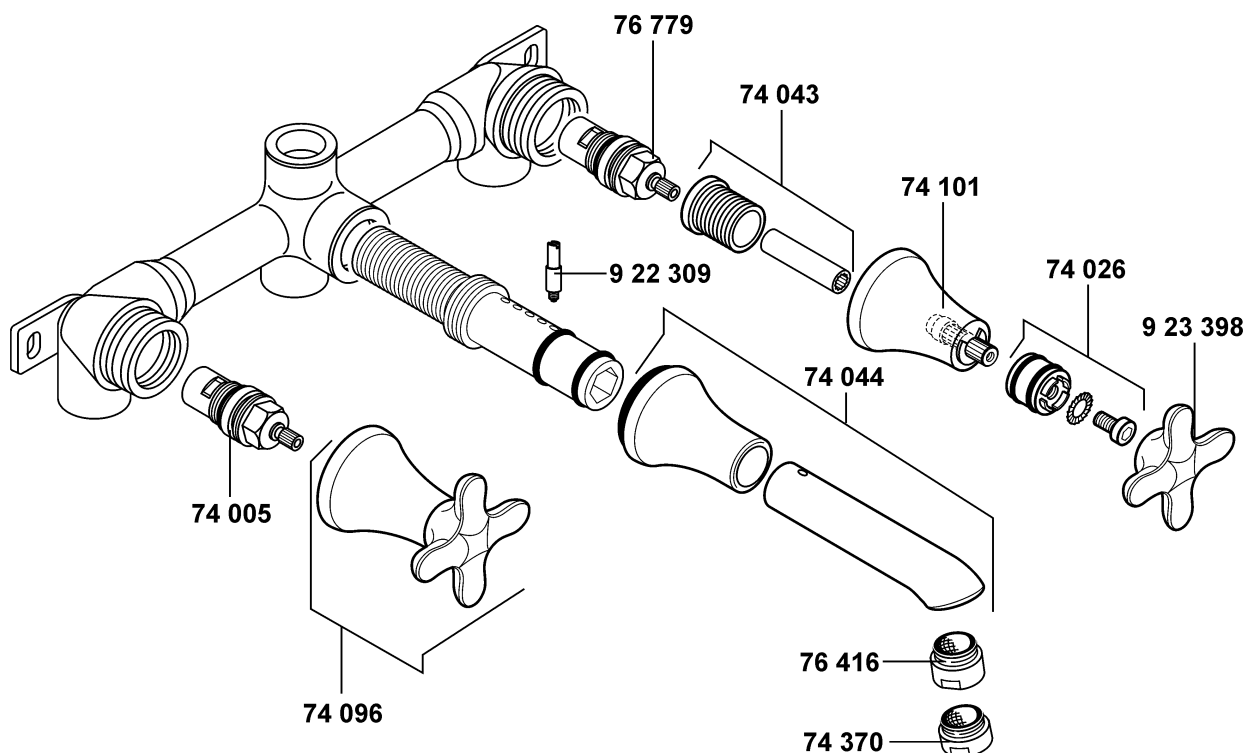


**54145**


A\_5414520

**54145**
**Waschtisch-Wandarmatur DN 15**
**wall mounted basin mixer DN 15**
**wastafel wandmengkraan 1/2"**

74 005 Keramik-Oberteil G 1/2, 90°  
 74 026 Griffbefestigung  
 74 043 Verlängerung  
 74 044 Auslauf KLUDI AMPHORA  
 74 096 Hebel vormontiert  
 74 101 Kappe  
 74 370 s-pointer Luftsprudler M 24 x 1  
 76 416 Cascade-Strahlregler M 24 x 1/A  
 76 779 Keramik-Oberteil G 1/2, 90°  
 922 309 Gewindestift  
 923 398 Griff KLUDI AMPHORA

ceramic headpart G 1/2, 90°  
 fastening set for handle  
 extension  
 spout KLUDI AMPHORA  
 lever preassembled  
 cap  
 s-pointer aerator M 24 x 1  
 Cascade-flow straightener M 24 x 1/A  
 ceramic headpart G 1/2, 90°  
 threading lathe  
 handle KLUDI AMPHORA

keramisch bovendeeel G 1/2, 90°  
 greepbevestiging  
 verlenging  
 uitloop KLUDI AMPHORA  
 hendel voormonteerd  
 dop  
 s-pointer perlator M 24 x 1  
 cascade straalbreker M 24 x 1/A  
 keramisch bovendeeel G 1/2, 90°  
 inbus schroef  
 greep KLUDI AMPHORA